

Roll Number

SET A



INDIAN SCHOOL MUSCAT
SECOND PRELIMINARY EXAMINATION
ENGINEERING GRAPHICS

CLASS: XII

Sub. Code: 046

Time Allotted: 3 Hrs

13.02.2019

Max. Marks: 70

General Instructions:

- (i) All dimensions are in millimetres.
- (ii) Missing and mismatching dimensions, if any, may be suitably assumed.
- (iii) Follow the SP: 46, 2003 revised codes. (with First angle method of projection)
- (iv) In no view of question 1, are hidden edges or lines required.
- (v) In question 4, hidden edges or lines are to be shown in views without section.

Q1 Construct an isometric scale.

03

A

B Draw the isometric projection to isometric scale of an inverted pentagonal pyramid of side 38 mm and height 75 mm, having one of the base sides perpendicular to VP. Indicate the direction of front view and mark all dimensions.

07

C Draw the isometric projection to isometric scale of the combination of frustum of a triangular pyramid having one of its sides perpendicular to VP (base side = 30 mm, top side = 45 mm, height = 55 mm), resting vertically and centrally on the rectangular face of a hexagonal prism (side = 45 mm, height = 80 mm). One of the sides of the prism is parallel to VP. Indicate the direction of view and mark all dimensions.

14

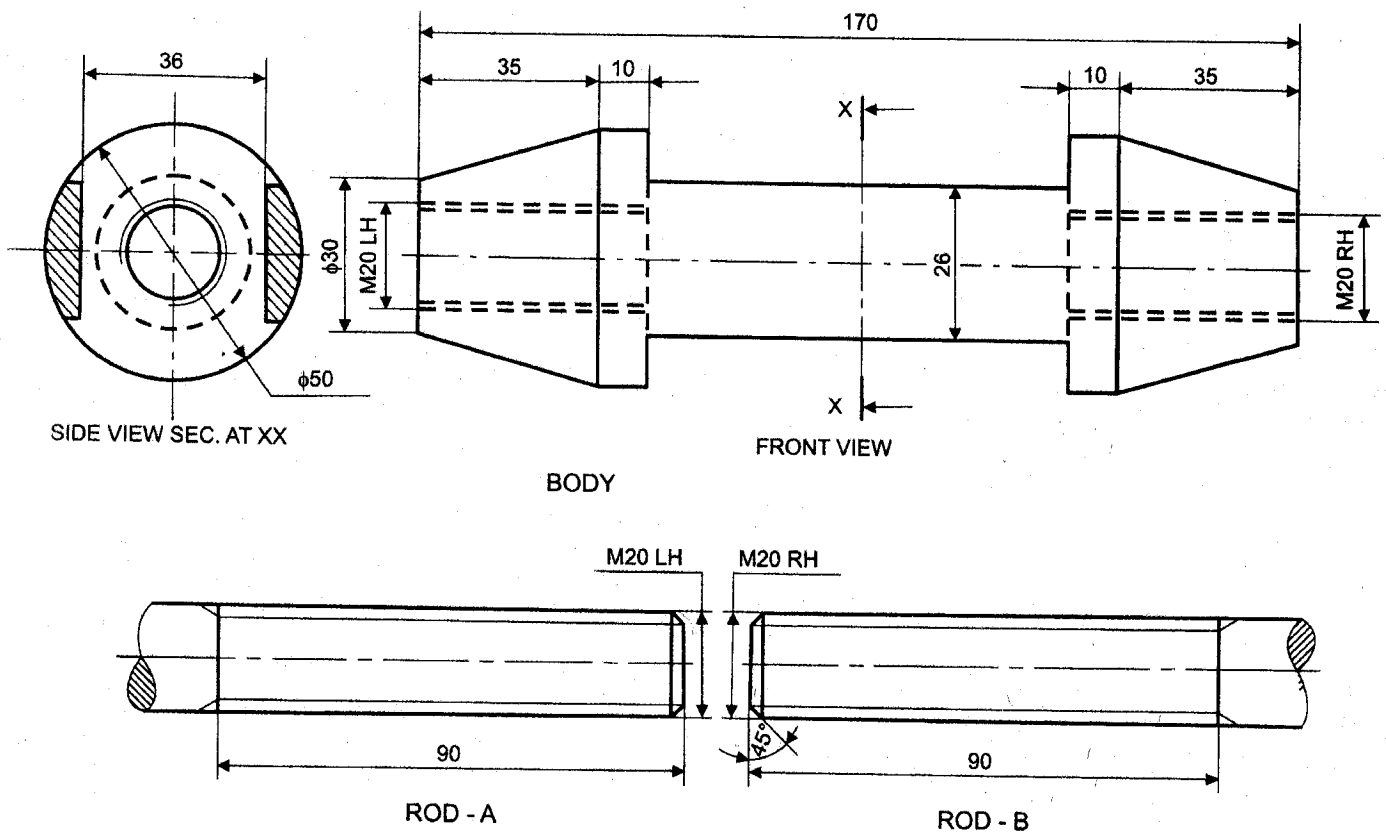
- Q2 Draw to scale 1:1, the top view and sectional front view of Single riveted lap joint, when the thickness of the plates to be joined is 9mm. 08
- A
- B Sketch freehand the front view and top view of a pan head rivet of diameter 25 mm keeping its axis vertical. Give standard dimensions. 05
- Q3 Answer the following Multiple Choice Questions. Print the correct choice on your answer sheet.
1. In parallel keys the thickness
 - a. Changes with the length of the key
 - b. Remains same throughout the length of the key.
 - c. Increase along the length
 - d. None of these
 - 2 Isometric view is a kind of
 - a. Perspective projection
 - b. Oblique projection
 - c. Axonometric projection
 - d. None of the above
 - 3 Which of the following is a suitable material for belt of the pulley?
 - a. Canvas
 - b. Leather
 - c. Rubber
 - d. All of the above
 - 4 joint is useful to fasten connecting rod of a steam engine or marine engine.
 - a. Sleeve and cotter
 - b. Turn buckle
 - c. Gib and cotter
 - d. Pipe
 - 5 The flank angle for unified thread is
 - a. 45°
 - b. 55°
 - c. 30°
 - d. 60°

Q4 Fig 1 shows details of **TURN BUCKLE**. Assemble the parts correctly by inserting 70 mm of the threaded portion of each rod, inside the body of the turn buckle and draw the following views to scale 1:1.

28

- Front view , upper half in section
- Top view
- Right side view.

Print title and scale used. Draw the projection symbol and mark all dimensions.



End of the Question Paper

Roll Number

SET C



INDIAN SCHOOL MUSCAT
SECOND PRELIMINARY EXAMINATION
ENGINEERING GRAPHICS

CLASS: XII

Sub. Code: 046

Time Allotted: 3 Hrs

13.02.2019

Max. Marks: 70

General Instructions:

- (i) All dimensions are in millimetres.
- (ii) Missing and mismatching dimensions, if any, may be suitably assumed.
- (iii) Follow the SP: 46, 2003 revised codes. (with First angle method of projection)
- (iv) In no view of question 1, are hidden edges or lines required.
- (v) In question 4, hidden edges or lines are to be shown in views without section.

- Q1 A Construct an isometric scale. 03
- B Draw the isometric projection to isometric scale of an inverted hexagonal pyramid of side 38 mm and height 75 mm, having one of the base sides perpendicular to VP. Indicate the direction of front view and mark all dimensions. 07
- C Draw the isometric projection to isometric scale of the combination of frustum of a triangular pyramid having one of its sides perpendicular to VP (base side = 30 mm, top side = 45 mm, height = 55 mm), resting vertically and centrally on the rectangular face of a pentagonal prism (side = 45 mm, height = 80 mm). One of the sides of the prism is parallel to VP. Indicate the direction of view and mark all dimensions. 14
- Q2 A Draw to scale 1:1, the top view and sectional front view of Single riveted lap joint, when the thickness of the plates to be joined is 9 mm. 08
- B Sketch freehand the front view and top view of a pan head rivet of diameter 25 mm keeping its axis vertical. Give standard dimensions. 05

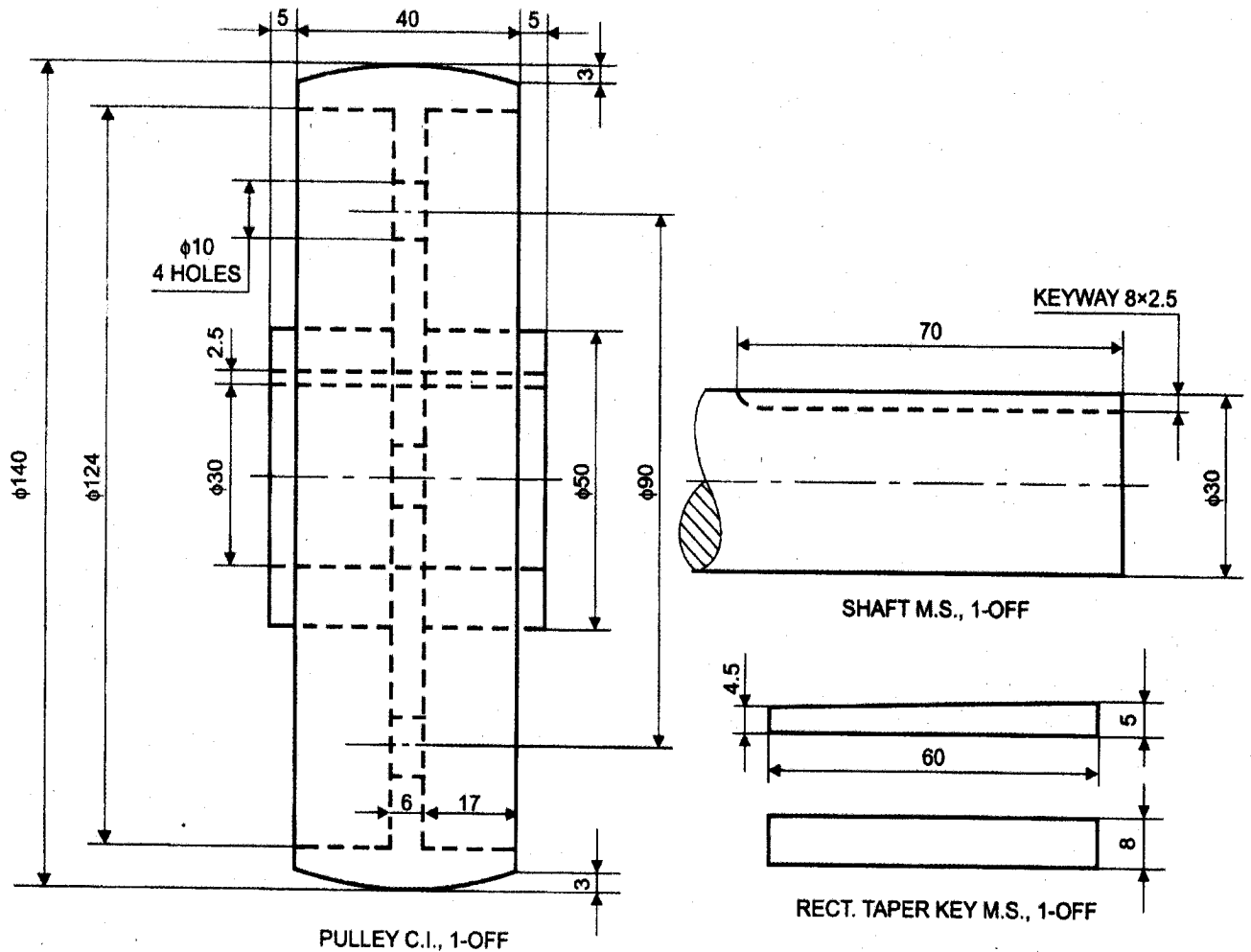
Q3 Answer the following Multiple Choice Questions. Print the correct choice on your answer sheet. 05

1. In parallel keys the thickness
 - a. Changes with the length of the key
 - b. Remains same throughout the length of the key.
 - c. Increase along the length
 - d. None of these
2. Isometric view is a kind of
 - a. Perspective projection
 - b. Oblique projection
 - c. Axonometric projection
 - d. None of the above
3. Which of the following is a suitable material for belt of the pulley?
 - a. Canvas
 - b. Leather
 - c. Rubber
 - d. All of the above
4. joint is useful to fasten connecting rod of a steam engine or marine engine.
 - a. Sleeve and cotter
 - b. Turn buckle
 - c. Gib and cotter
 - d. Pipe
5. The flank angle for unified thread is
 - a. 45°
 - b. 55°
 - c. 30°
 - d. 60°

Q4 Fig 1 shows details of **SOLID WEB CAST IRON PULLEY**. Assemble the parts correctly and draw the following views to scale 1:1. 28

- Front view ,upper half in section
- Left side view.

Print title and scale used. Draw the projection symbol and mark all dimensions.



End of the Question Paper

2/12/2019

Roll Number		
-------------	--	--

SET B



INDIAN SCHOOL MUSCAT
SECOND PRELIMINARY EXAMINATION
ENGINEERING GRAPHICS

CLASS: XII

Sub. Code: 046

Time Allotted: 3 Hrs

13.02.2019

Max. Marks: 70

General Instructions:

- (i) All dimensions are in millimetres.
- (ii) Missing and mismatching dimensions, if any, may be suitably assumed.
- (iii) Follow the SP: 46, 2003 revised codes. (with First angle method of projection)
- (iv) In no view of question 1, are hidden edges or lines required.
- (v) In question 4, hidden edges or lines are to be shown in views without section.

- Q1 A Construct an isometric scale. 03
- B Draw the isometric projection to isometric scale of an inverted triangular pyramid of side 38 mm and height 75 mm, having one of the base sides perpendicular to VP. Indicate the direction of front view and mark all dimensions. 07
- C Draw the isometric projection to isometric scale of the combination of frustum of a pentagonal pyramid having one of its sides perpendicular to VP (base side = 30 mm, top side = 45 mm, height = 55 mm), resting vertically and centrally on the rectangular face of a hexagonal prism (side = 45 mm, height = 80 mm). One of the sides of the prism is parallel to VP. Indicate the direction of view and mark all dimensions. 14
- Q2 A Draw to scale 1:1, the standard profile of Metric thread (external), taking enlarged pitch as 50 mm. Give standard dimensions. 08
- B Sketch freehand the front view and top view of a snap head rivet of diameter 25 mm keeping its axis vertical. Give standard dimensions. 05

Q3 Answer the following Multiple Choice Questions. Print the correct choice on your answer sheet.

05

1. In parallel keys the thickness
 - a. Changes with the length of the key
 - b. Remains same throughout the length of the key.
 - c. Increase along the length
 - d. None of these

2. Isometric view is a kind of
 - a. Perspective projection
 - b. Oblique projection
 - c. Axonometric projection
 - d. None of the above

3. Which of the following is a suitable material for belt of the pulley?
 - a. Canvas
 - b. Leather
 - c. Rubber
 - d. All of the above

4. joint is useful to fasten connecting rod of a steam engine or marine engine.
 - a. Sleeve and cotter
 - b. Turn buckle
 - c. Gib and cotter
 - d. Pipe

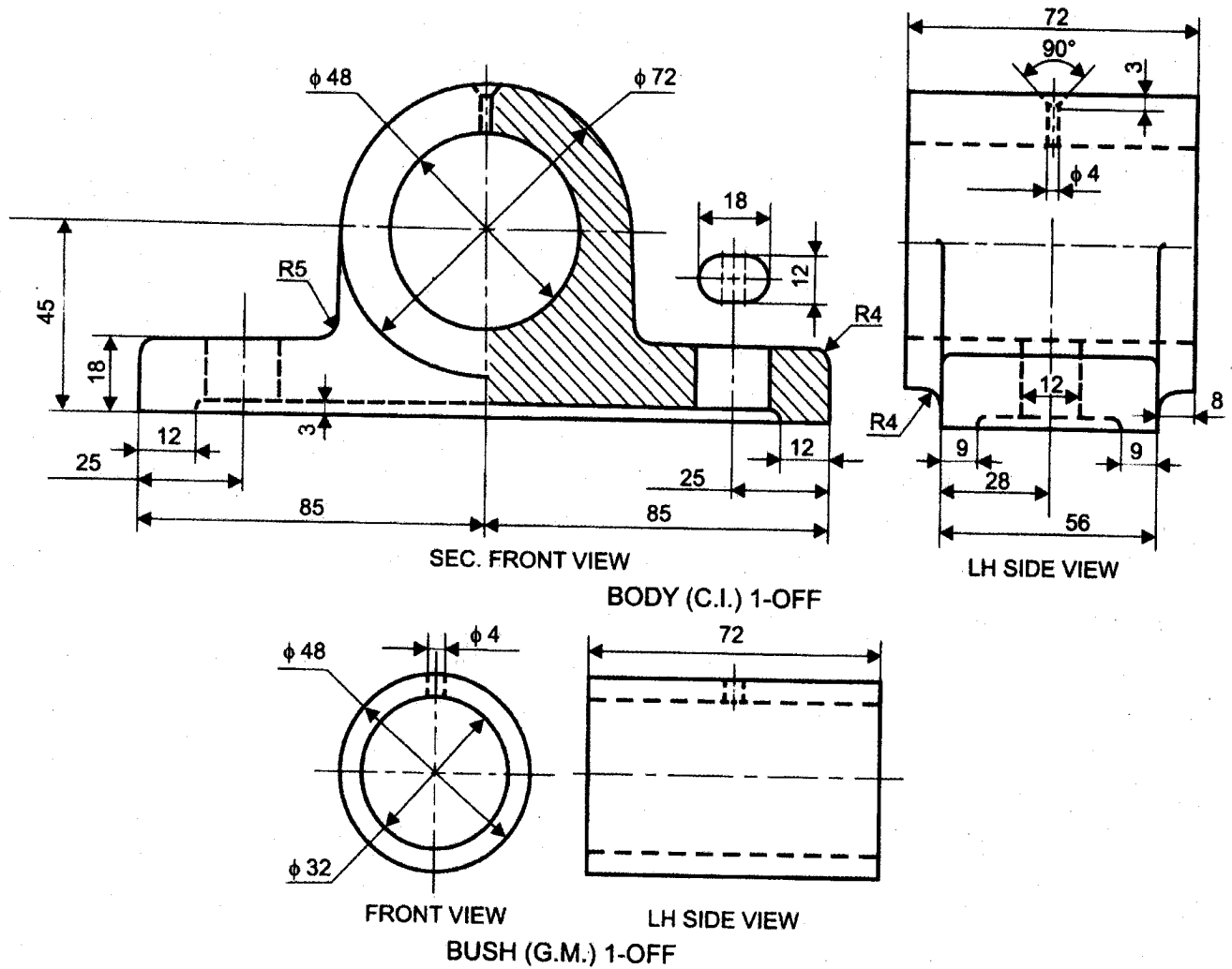
5. The flank angle for unified thread is
 - a. 45°
 - b. 55°
 - c. 30°
 - d. 60°

Q4

Fig 1 shows details of **BUSHED BEARING**. Assemble the parts correctly and draw the following views to scale 1:1. 28

- Front view, left half in section
- Top view
- Left side view.

Print title and scale used. Draw the projection symbol and mark all dimensions.



End of the Question Paper